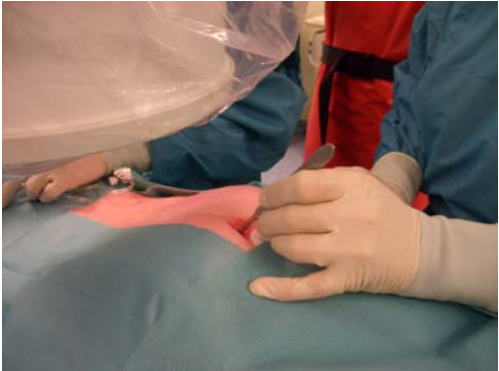
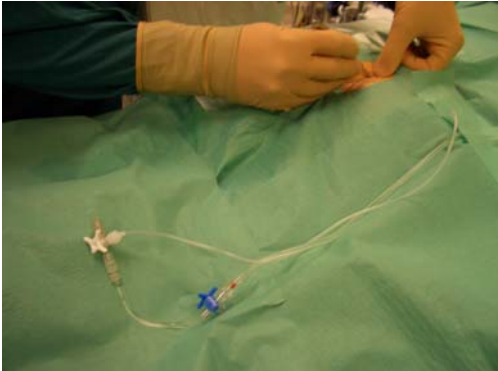
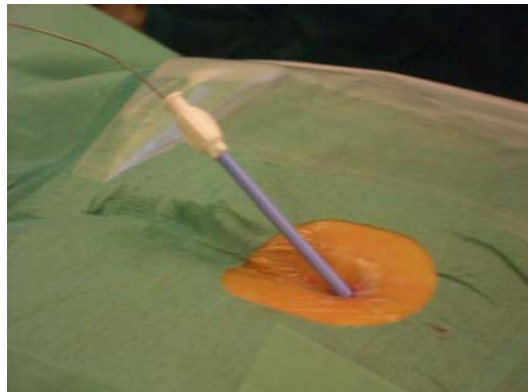
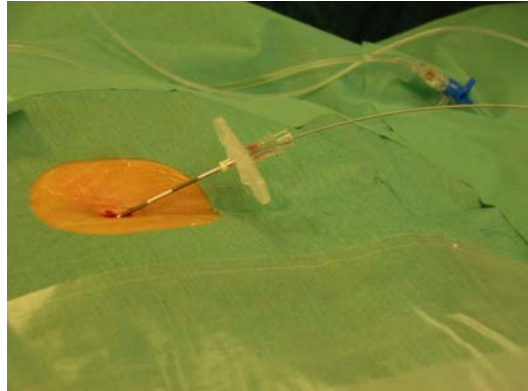
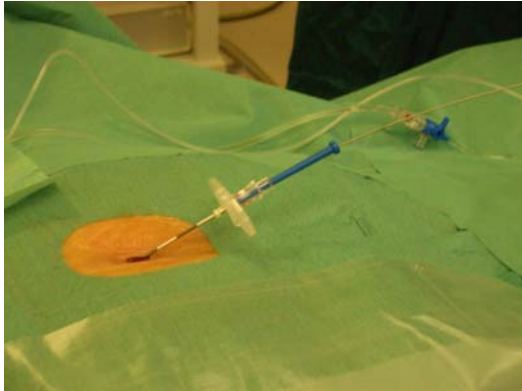
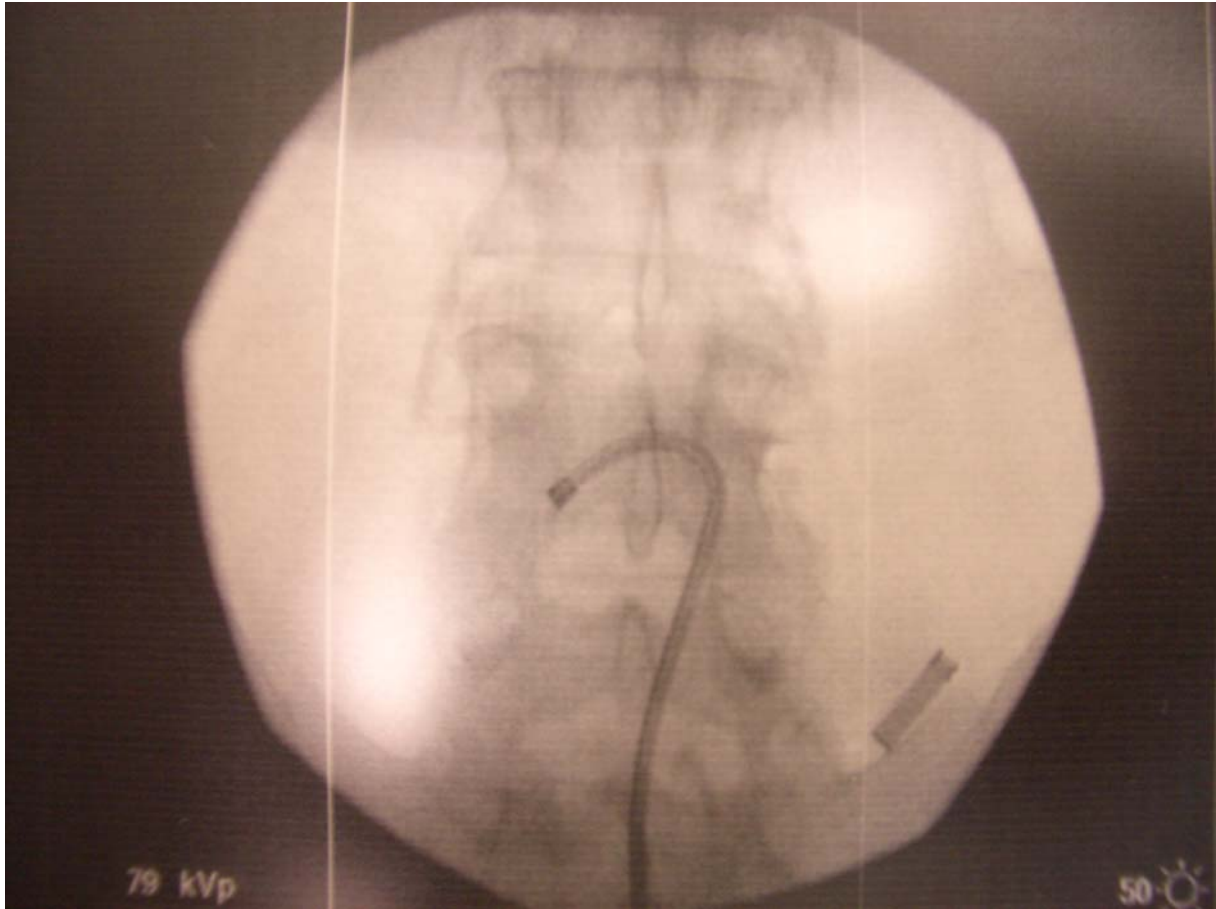


Introduction of the Epi-C epiduroscope step by step









For more information contact:

Equip Medikey BV
Edisonstraat 16J
2809 PB Gouda
The Netherlands

Tel +31 182 573 293
Fax +31 182 531 364
info@equip.nl
www.epi-c.nl

Thanks to dr R.van Seventer and mr H.Schaaf